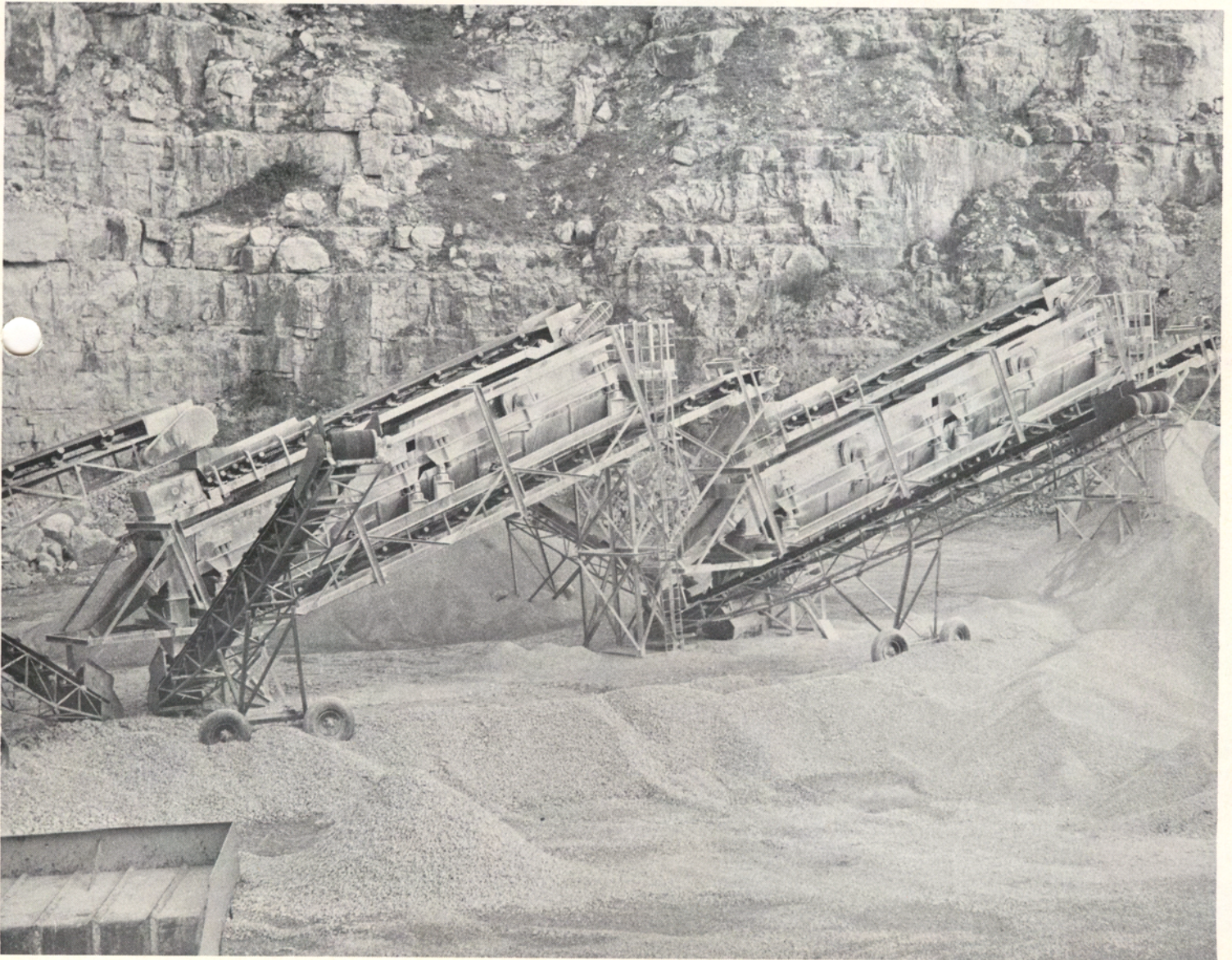




**GOODWIN  
BARSBY**

# **VITEX**

**VIBRATING SCREENS**





# Vitex

## Standard and Heavy-duty Vibrating Screens

**The high output with accurate sizing .... long life, reliability and low operating costs of Vitex Screens ensure optimum all-round performance.**

### Efficient screening

Positive vibration, created by the four-bearing eccentric shaft, ensures rapid spread and stratification of the aggregate. It provides constant mesh movement at all points of the screening decks and allows heavy surge loading to be accommodated without reduction of the screen vibration. Screens can be arranged to give separation by selection or rejection, depending on space limitations and distribution of the screened product required.

### Versatility

Operating on a positive throw principle, allows Vitex screens to be mounted at 12° and 20° to the horizontal. The direction of throw of the eccentric shaft can be reversed according to angle of inclination and duty. Such versatility makes the Vitex range suitable for handling rock, gravel, ore, coal, etc., without major adjustments or alterations. For aggregate rinsing and sand washing, water spray bars can be fitted as Optional Extras. Vibro foot-mounted insulators at

all four corners give almost complete isolation of vibration from the support structure.

### Economy

The integral electric motor drive, which can be arranged to either side of the screen, eliminates the need for additional expensive structure. The high standard of Goodwin design and engineering, plus the use of top quality material for all components — particular attention being given to the eccentric shaft, bearings and bearing housings — give Vitex screens long life and dependable trouble-free operation with minimum down-time for maintenance and replacement. In addition to maintaining the panels at the correct stress, the mesh tensioning device allows for rapid and easy changing of mesh decks. With only minor adjustments it accommodates varying thicknesses of deck. To ensure quick replacement, panels

## SPECIFICATION

### INNER FRAME

Of heavy welded steel construction, suitably braced. Sides are bored to accommodate the inner bearing housings. Longitudinal centre supports impart necessary camber to the screen panels. The frame is supported on four sets of adjustable springs.

### UNDERFRAME

Of heavy welded steel construction. Vibro insulators are fitted at each corner, to eliminate the transmission of vibration to the structure.

### SCREENING PANELS

Of high tensile woven wire, perforated plate or longitudinal steel bars, dependent upon duty required. A simple but positive mesh tensioning device ensures that the panels are maintained at the correct stress to guarantee efficient screening. This tensioning device will also quickly accommodate varying thickness of panel.

### BEARINGS

Heavy-duty double row, self-aligning spherical roller type. Outer bearings fitted in housings on the main members of the underframe, inner bearings fitted in housings on either side of the inner frame. All bearings are sealed against dust and moisture by carefully machined labyrinths. Grease nipples are provided for lubrication.

### VIBRATING UNIT

The vibrating unit is an eccentric shaft accurately machined from oil-toughened, high tensile forged steel.

### BALANCE

Two steel segmental arms fitted to the eccentric shaft on each side of the frame, carry adjustable balance weights, to ensure smooth running.

### DRIVE PULLEY

Vee-belt pulleys are standard and fitted to right-hand side (facing

feed end) unless otherwise requested.

### WATER SPRAYS (Optional Extra)

For wet screening, a suitable arrangement of water sprays can be supplied. The jets cover the entire width of the screen surface, ensuring that all material is subjected to a thorough cleansing.

### ELECTRIC MOTOR & DRIVE (Optional Extra)

It is standard practice when supplying these to mount the motor on the screen underframe on all sizes down to the 3050 mm (10' 0") long sizes. On the smaller models the motor is floor-mounted alongside the machine to suit the particular installation. This can also apply to the larger units if required.



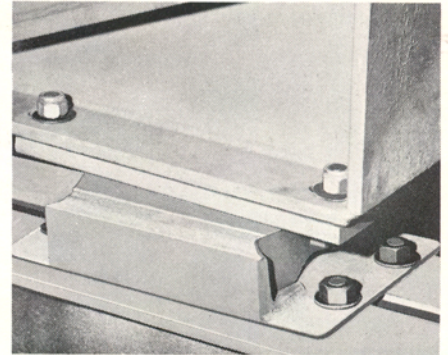
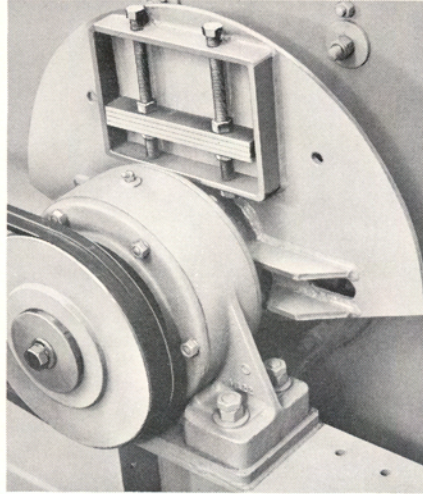


are removeable from either end of the screen.

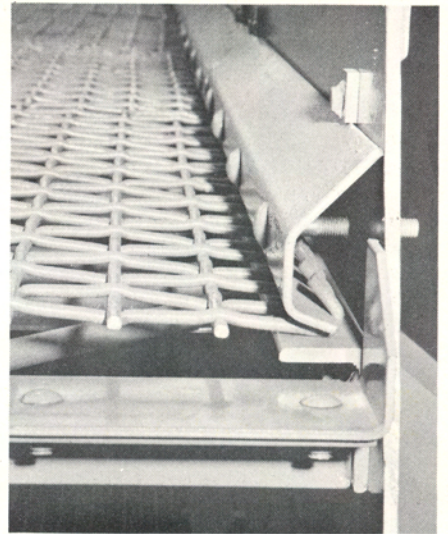
**Expert advice**

Goodwin engineers are always available to give their expert advice on the selection of the correct screen for any particular application.

*Adjustable weights for accurate balancing*



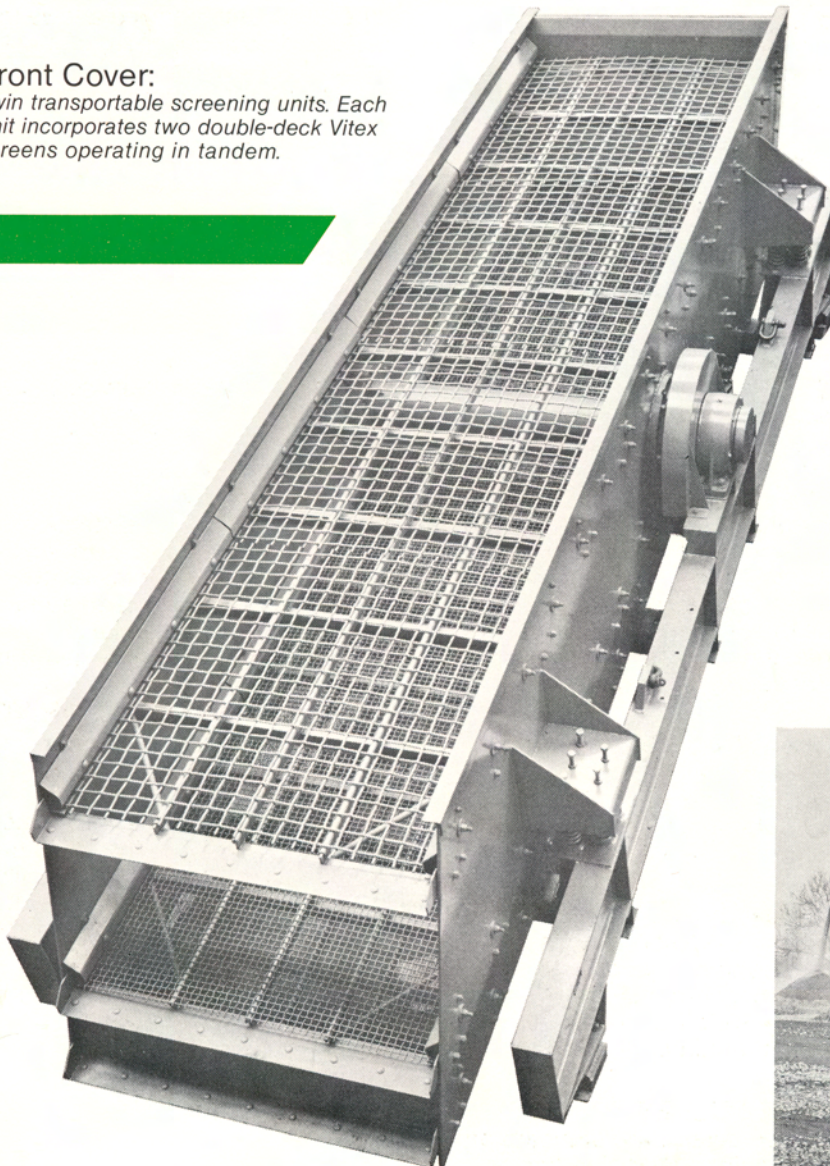
*Anti-vibration mounting*



*Mesh tensioning device*

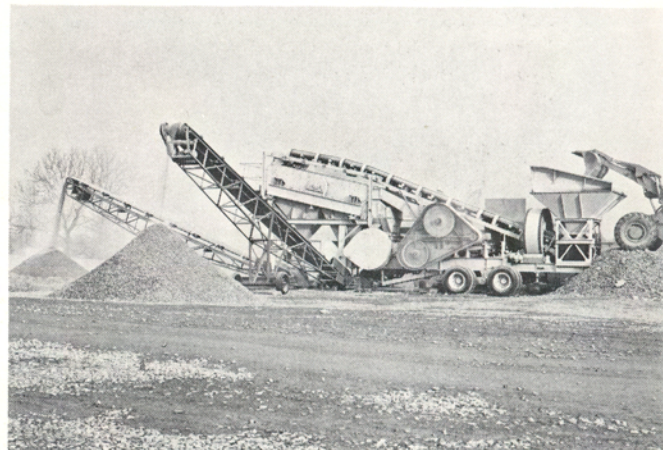
**Front Cover:**

*Twin transportable screening units. Each unit incorporates two double-deck Vitex screens operating in tandem.*



**Mobile units**

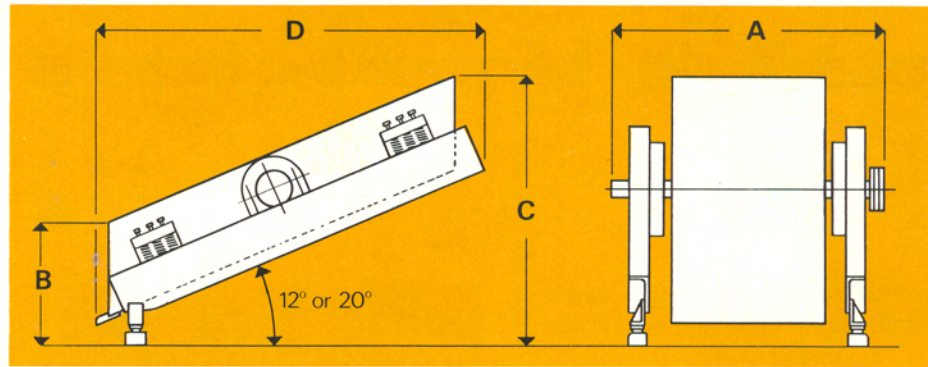
All Vitex screens are suitable for inclusion in mobile plants. Below is a typical example — a triple-deck Vitex incorporated in a high-capacity Goliath 36/30 mobile crushing and screening plant.





## Dimensions and Weights

Certified drawings will be provided on request. Electric drive motors must be capable of providing minimum starting torque of 240% full load rating.



### STANDARD SCREENS

Size of Screen mm	No. of Decks	A		B		C Screen at 20°		D Screen at 20°		C Screen at 12°		D Screen at 12°		Motor Power		Nett Weight		Shipping Volume	
		mm	ins	mm	ins	mm	ins	mm	ins	mm	ins	mm	ins	kW	HP	kg.	Tons	cu.m	cu.ft.
2440 x 1370 8' 0" x 4' 6"	1	2055	81	685	27	1550	61	2590	102	1370	54	2690	106	4.0	5½	1006	0.99	4.53	160
	2	2055	81	1065	42	1930	76	2615	103	1675	66	2715	107	5.5	7½	1290	1.27	6.34	224
	3	2085	82	1345	53	2210	87	2640	104	1980	78	2740	108	7.5	10	1696	1.67	8.41	297
3050 x 1370 10' 0" x 4' 6"	1	2055	81	685	27	1755	69	3200	126	1395	55	3355	132	5.5	7½	1158	1.14	5.58	197
	2	2085	82	1065	42	2135	84	3200	126	1755	69	3355	132	7.5	10	1625	1.60	7.79	275
	3	2135	84	1345	53	2415	95	3300	130	2005	79	3450	136	7.5	10	2153	2.12	10.08	356
3660 x 1370 12' 0" x 4' 6"	1	2055	81	710	28	1980	78	3785	149	1500	59	3915	154	5.5	7½	1351	1.33	6.88	243
	2	2085	82	1065	42	2335	92	3810	150	1855	73	3940	155	7.5	10	1889	1.86	9.15	323
	3	2160	85	1345	53	2615	103	4040	159	2185	86	4165	164	11.0	15	2764	2.72	12.66	447
4270 x 1370 14' 0" x 4' 6"	1	2085	82	840	33	2335	92	4370	172	1675	66	4545	179	7.5	10	1737	1.71	8.55	302
	2	2160	85	1090	43	2590	102	4495	177	2005	79	4675	184	11.0	15	2693	2.65	11.41	403
	3	2185	86	1295	51	2795	110	4445	175	2235	88	4625	182	11.0	15	3017	2.97	14.47	511
4875 x 1525 16' 0" x 5' 0"	1	2310	91	840	33	2540	100	4953	195	1905	75	5155	203	11.0	15	3281	3.23	11.41	403
	2	2360	93	1145	45	2845	112	5029	198	2210	87	5205	205	15.0	20	3759	3.70	16.17	571
	3	2415	95	1550	61	3550	128	5335	210	2615	103	5460	215	15.0	20	5181	5.10	22.45	793
6095 x 1525 20' 0" x 5' 0"	1	2360	93	815	32	2920	115	6120	241	2110	83	6325	249	11.0	15	5160	5.08	17.19	607
	2	2415	95	1345	53	3455	136	6120	241	2640	104	6325	249	15.0	20	5231	5.15	23.25	821
	3	2415	95	1525	60	3630	143	6120	241	2845	112	6350	290	18.5	25	6350	6.25	26.82	947

### HEAVY DUTY SCREENS (SCALPING)

Size of Screen mm	No. of Decks	A		B		C Screen at 20°		D Screen at 20°		C Screen at 12°		D Screen at 12°		Motor Power		Nett Weight		Shipping Volume	
		mm	ins	mm	ins	mm	ins	mm	ins	mm	ins	mm	ins	kW	HP	kg.	Tons	cu.m	cu.ft.
2440 x 1370 8' 0" x 4' 6"	1	2055	81	660	26	1525	60	2640	104	1270	50	2740	108	5.5	7½	1675	1.65	5.76	203
	2	2160	85	1145	45	1980	78	2640	104	1650	65	2715	107	7.5	10	2185	2.15	7.45	263
3050 x 1680 10' 0" x 5' 6"	1	2490	98	840	33	1905	75	3250	128	1475	58	3405	134	7.5	10	2742	2.70	9.55	337
	2	2490	98	1320	52	2415	95	3225	127	2005	79	3380	133	11.0	15	3225	3.17	12.10	427
3660 x 1680 12' 0" x 5' 6"	1	2465	97	840	33	2110	83	3810	150	1725	68	3940	155	11.0	15	2950	2.90	12.08	426
	2	2540	100	1450	57	2740	108	3810	150	2335	92	3940	155	15.0	20	4070	4.00	16.45	580
4270 x 1680 14' 0" x 5' 6"	1	2464	97	865	34	2310	91	4395	173	1830	72	4545	179	11.0	15	3150	3.10	13.39	473
	2	2540	100	1450	57	2921	115	4420	174	2285	96	4600	181	15.0	20	4420	4.35	18.20	641

Crusher Manganese Steels inc Cepcor  
 Vulcan Way, Hermitage Ind Est  
 Coalville, Leics, LE67 3AP  
 Tel : +44(0)1530 817000  
 Fax : +44(0)1530 817111  
 email : sales@crushers.co.uk

Safeguarding the outstanding performance of Goodwin products is a world-wide network of Distributors staffed and equipped to provide first class parts and service facilities.

The rigid quality control and critical inspection applied to Goodwin equipment during manufacture has been recognised in the granting of approval under MOD Standard O5/21.



# GOODWIN BARSBY